

Year	No Lambs	8 Wk Weight	Mature Size	Litter Size	Maternal Ability	Scan Weight	Muscle Depth	Fat Depth	Lean Weight	Fat Weight	Gigot Musc'	FEC	Index	Index	BLUP Run ID
1990	19,387	0.35	0.13	0.01	0.08	0.68	0.09	0.01	0.15	0.12	0.17	0.02	90.59	0.00	20080914
1991	18,069	0.43	0.13	0.01	0.08	0.84	0.17	0.01	0.22	0.14	0.26	0.02	95.21	0.00	20080914
1992	19,145	0.58	0.16	0.01	0.09	1.18	0.25	0.03	0.29	0.20	0.37	0.02	99.21	0.00	20080914
1993	19,030	0.66	0.18	0.02	0.10	1.34	0.31	0.01	0.31	0.20	0.43	0.03	99.05	0.00	20080914
1994	18,973	0.79	0.22	0.03	0.11	1.67	0.36	0.01	0.42	0.25	0.61	0.03	107.49	0.00	20080914
1995	17,994	0.88	0.26	0.03	0.11	1.88	0.42	0.00	0.47	0.26	0.73	0.03	109.19	0.00	20080914
1996	18,434	0.98	0.32	0.04	0.12	2.11	0.47	-0.02	0.55	0.28	0.82	0.03	114.52	0.00	20080914
1997	20,654	1.16	0.38	0.04	0.12	2.53	0.59	-0.04	0.71	0.33	1.02	0.03	125.53	0.00	20080914
1998	22,624	1.31	0.41	0.05	0.10	2.82	0.74	-0.04	0.81	0.35	1.19	0.03	132.53	0.00	20080914
1999	22,863	1.46	0.43	0.05	0.12	3.19	0.87	-0.02	0.89	0.39	1.32	0.04	139.77	0.00	20080914
2000	21,723	1.58	0.46	0.06	0.13	3.47	0.93	-0.03	0.96	0.42	1.44	0.04	142.89	0.00	20080914
2001	18,448	1.73	0.56	0.07	0.13	3.87	0.89	-0.02	1.09	0.48	1.59	0.05	153.70	0.00	20080914
2002	19,506	1.84	0.58	0.07	0.11	4.11	0.92	-0.04	1.17	0.49	1.73	0.04	159.24	0.00	20080914
2003	29,605	1.76	0.62	0.08	0.06	3.97	0.79	-0.04	1.16	0.48	1.70	0.06	158.47	0.00	20080914
2004	32,506	1.86	0.56	0.09	0.00	4.18	0.86	-0.06	1.25	0.49	1.80	0.07	164.99	0.00	20080914
2005	36,817	1.94	0.50	0.10	-0.03	4.35	0.93	-0.07	1.30	0.50	1.84	0.09	168.04	0.00	20080914
2006	37,159	2.02	0.51	0.11	-0.07	4.57	0.96	-0.08	1.36	0.51	1.98	0.10	172.57	0.00	20080914
2007	35,548	2.12	0.51	0.11	-0.09	4.80	1.03	-0.09	1.42	0.52	2.08	0.12	175.40	0.00	20080914
2008	34,716	2.25	0.54	0.12	-0.10	5.08	1.08	-0.09	1.52	0.55	2.25	0.12	184.03	0.00	20080914
2009	34,422	2.33	0.51	0.12	-0.10	5.26	1.13	-0.09	1.56	0.57	2.32	0.12	186.53	0.00	20080914
2010	31,992	2.59	0.54	0.12	-0.09	5.79	1.29	-0.09	1.79	0.64	2.57	0.13	203.25	0.00	20080914
2011	32,063	2.81	0.57	0.13	-0.09	6.26	1.36	-0.10	1.93	0.70	2.79	0.13	212.81	0.00	20080914

BLUP Run Number: 20080914 - 07/10/2011 - Texel

1990 (01/08/1989 - 31/07/1990)

Number of Lambs: 32,063  
Average 8 week weight EBV 2.808  
Average mature size EBV 0.573  
Average litter size EBV 0.13  
Average maternal ability EBV -0.09  
Average scan weight EBV 6.26  
Average muscle depth EBV 1.36  
Average fat depth EBV -0.10  
Average lean weight EBV 1.93  
Average fat weight EBV 0.70  
Average gigot muscularity EBV 2.79  
Average FEC EBV 0.13  
Average Terminal Sire Index 212.81  
Average Index 0.00

BLUP Run Number: 20080914 - 07/10/2011 - Texel

1990 (01/08/1989 - 31/07/1990)

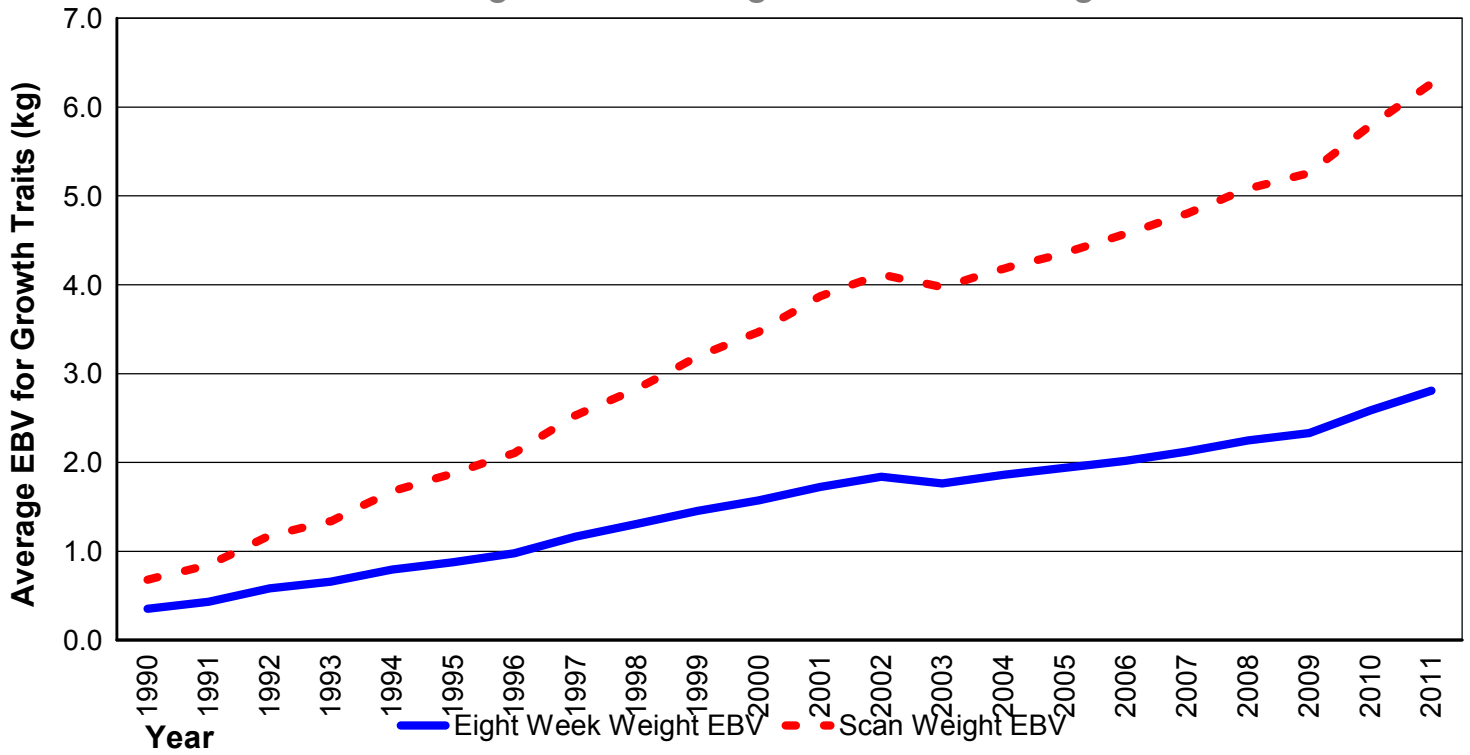
20080914/17-10-2011/2

R:\Sheep\GeneticTrends.rpt

17/10/2011 12:19:47

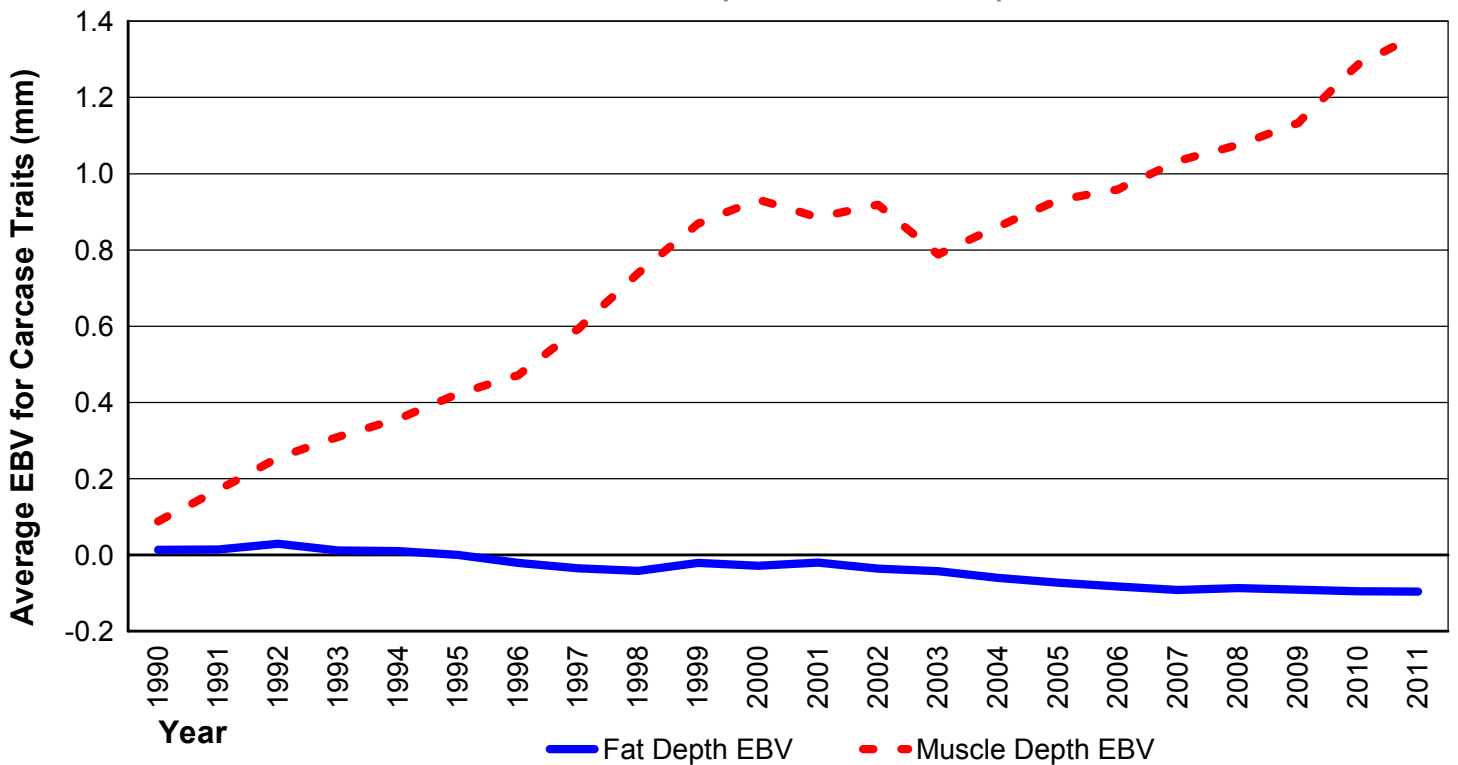
## Texel Genetic Trends 2011

### Eight Week Weight and Scan Weight



## Texel Genetic Trends 2011

### Muscle Depth and Fat Depth



BLUP Run Number: 20080914 - 07/10/2011 - Texel

1990 (01/08/1989 - 31/07/1990)

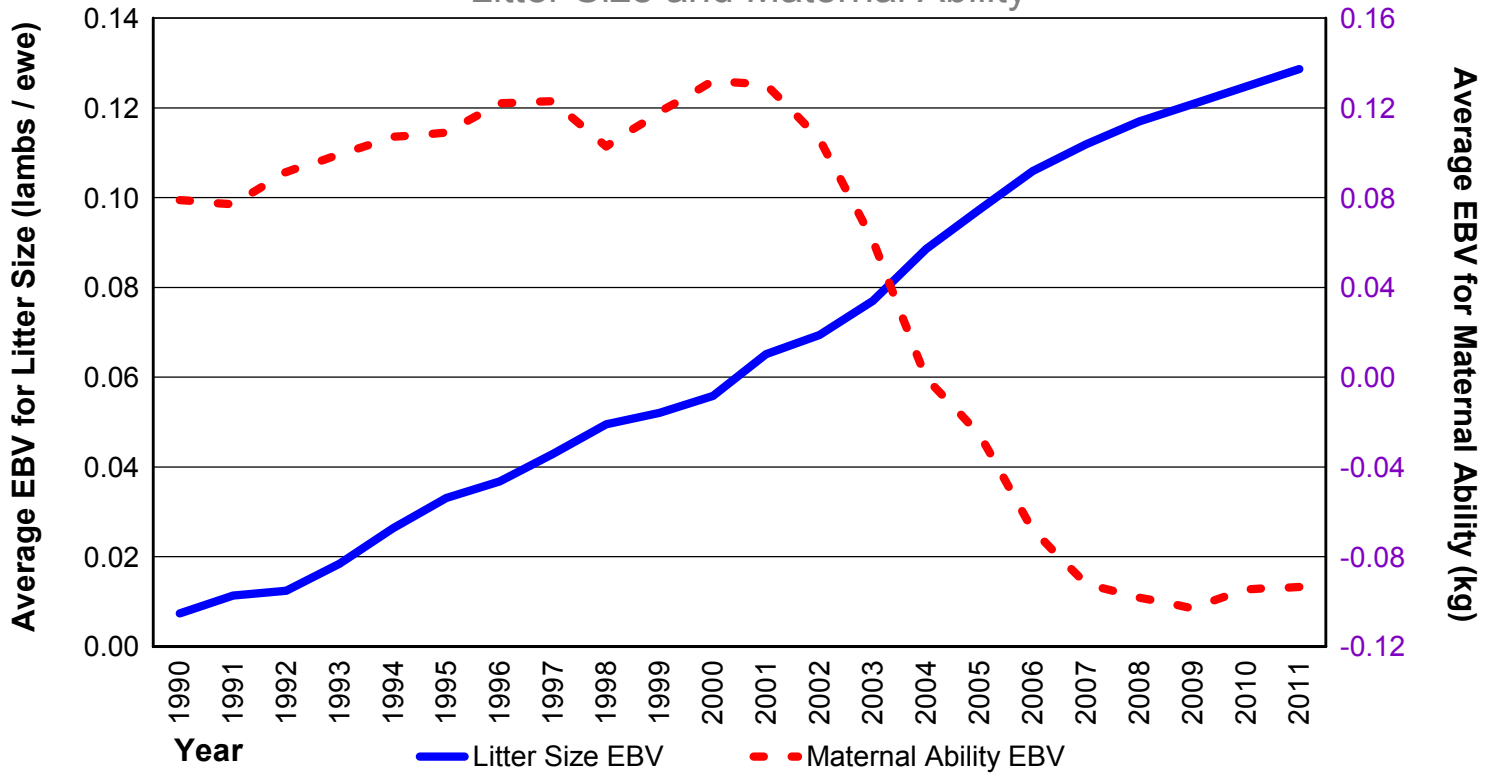
20080914/17-10-2011/3

R:\Sheep\GeneticTrends.rpt

17/10/2011 12:19:47

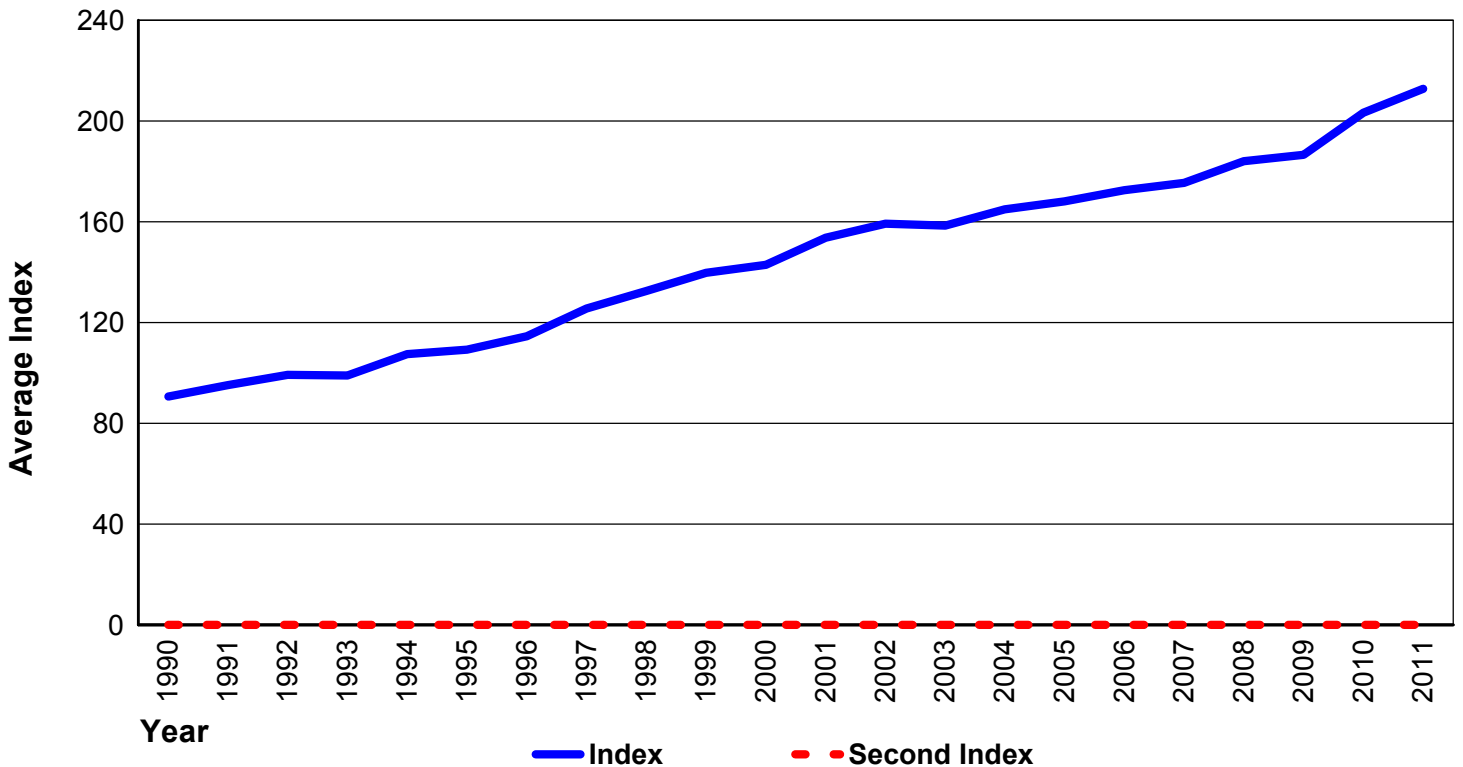
## Texel Genetic Trends 2011

### Litter Size and Maternal Ability



## Texel Genetic Trends 2011

### Terminal Sire Index



BLUP Run Number: 20080914 - 07/10/2011 - Texel

1990 (01/08/1989 - 31/07/1990)